

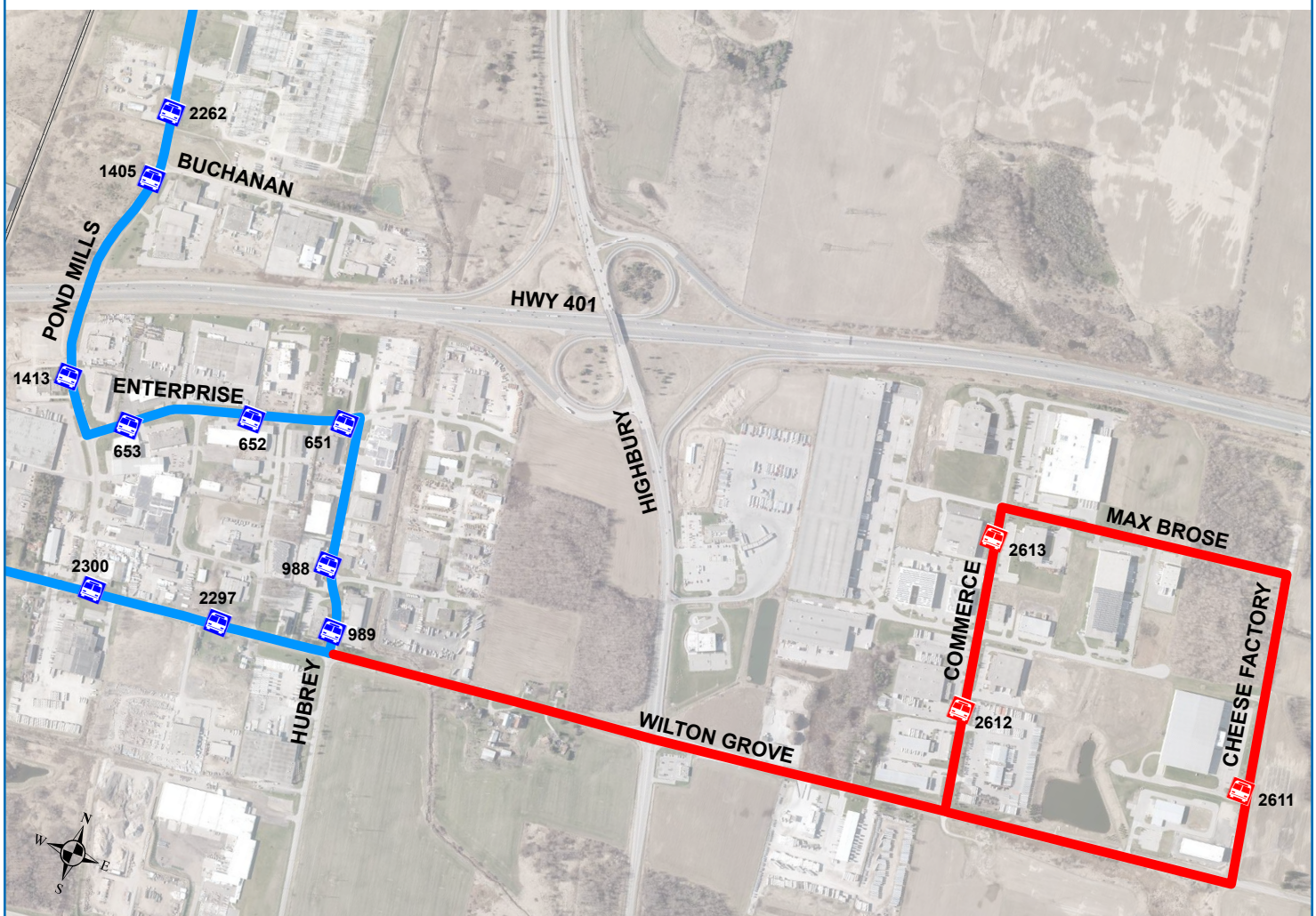
WILTON GROVE CONSTRUCTION DETOUR ROUTE #30



Due to construction work being done on Wilton Grove west of Highbury, there will be a full closure on Wilton Grove starting first bus on October 23rd, 2020 and will continue on until the end of December 2020. During this time, LTC services **will not be able to access the industrial area between Cheese Factory and Commerce.**

For the duration of the project, LTC will have a detour in place that will still allow transit access up to Stop 989 at Wilton Grove and Hubrey, however employees that rely on public transit will be required to traverse the remaining distance to their place of employment. Please see below for a map of the detour details.

We apologize for the inconvenience that this may cause and thank you for your understanding. For any transit related questions, please contact us at 519-451-1347.



LEGEND

-  Closed Stops
-  Existing Stops
-  Closed RT Sections
-  Existing Route



519-451-1347
www.londontransit.ca

