

2024 CONVENTIONAL TRANSIT SERVICE PLAN CHANGES

Five Year Service Plan 2020-2024

The following recommended changes were included for consideration as part of the 2020-2024 Conventional Transit Service Plan Framework.

ROUTE 5

Proposed Service Changes:

1. Weekday – Increase frequency from 60 minutes to 30 minutes between 6 pm and 12 am

Issue/Rationale:

As part of the 2020-2024 Conventional Transit Service Plan, the elimination of all 60 minute headways was a top priority. Increasing frequency from 60 minutes to 30 minutes aligns with this strategic direction and provides much needed frequency improvements during the late evening period along Springbank and into the Byron and Fairmount neighbourhoods.

Proposed Service Change	Annual Service Hour Impact	Service Hour Impact (2024)	PM Peak Bus Requirements
Weekday – Increase frequency from 60 minutes to 30 minutes between 6 pm and 12 am	3,024	996	0

ROUTE 10

Proposed Service Changes:

2. Weekday – Increase frequency from 30 minutes to 20 minutes between 6 am and 7 am
3. Weekday – Increase frequency from 20 minutes to 16 minutes between 7 am and 9 am
4. Weekday – Increase frequency from 20 minutes to 16 minutes between 2 pm and 6 pm
5. Sunday – Increase frequency from 60 minutes to 30 minutes between 6 pm and 11pm

Issue/Rationale:

As part of the Rapid Transit Implementation Plan, local routes connecting to a rapid transit line are to have a frequency of no more than twice the headway of the rapid transit routes. With Route 10 connecting to the East London Link that will be operating at a five-minute frequency, 10-minute headways are targeted for Route 10. Targeting a 10-minute headway requires a significant amount of resources and as such, it is proposed as part of the 2024 Service Plan to slowly start to introduce increased frequency on Route 10, by introducing frequencies between 16 and 20 minutes. In addition, the proposed increased frequency will address current crowding conditions, eliminate the last remaining service period with 60 minute frequency and functioning as a necessary first step in achieving the headway targets by 2027.

Proposed Service Change	Annual Service Hour Impact	Service Hour Impact (2024)	PM Peak Bus Requirements
Weekday – Increase frequency from 30 minutes to 20 minutes between 6 am and 7 am	756	243	0
Weekday – Increase frequency from 20 minutes to 16 minutes between 7am and 9 am	1,512	486	0
Weekday – Increase frequency from 20 minutes to 16 minutes between 2 pm and 6 pm	3,024	972	3
Sunday – Increase frequency from 60 minutes to 30 minutes between 6 pm and 11 pm	930	330	0

ROUTE 20

Proposed Service Changes:

1. Extend service to Oakcrossing during all operating periods

Issue/Rationale:

Currently, the Oakcrossing neighborhood is not serviced after 9pm on Weekdays and not serviced at all on weekends. For riders who live in this area, it creates a large service gap. By providing service to the Oakcrossing neighborhood at all times, this not only benefits transit users in Oakcrossing, but all transit users who use Route 20 in the area as keeping the same routing at all times eliminates any confusion about where the bus will be going at any given time. See Figures I-II

Impacts

Service is maintained along Capulet Lane by Route 27 during the evening and weekend periods, resulting in limited impacts to existing riders in the area.

Recommended Service Change	Annual Service Hour Impact	Service Hour Impact (2024)	PM Peak Bus Requirements
Extend service to Oakcrossing during all operating periods	3,050	901	0

Figure I

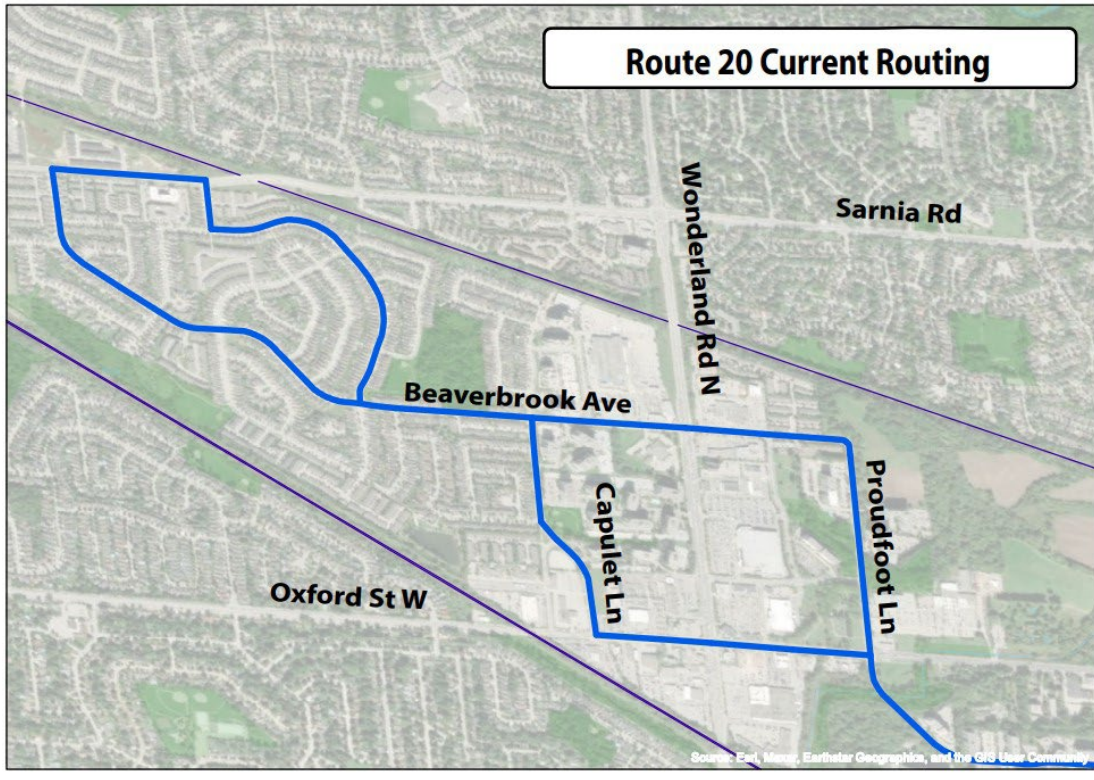
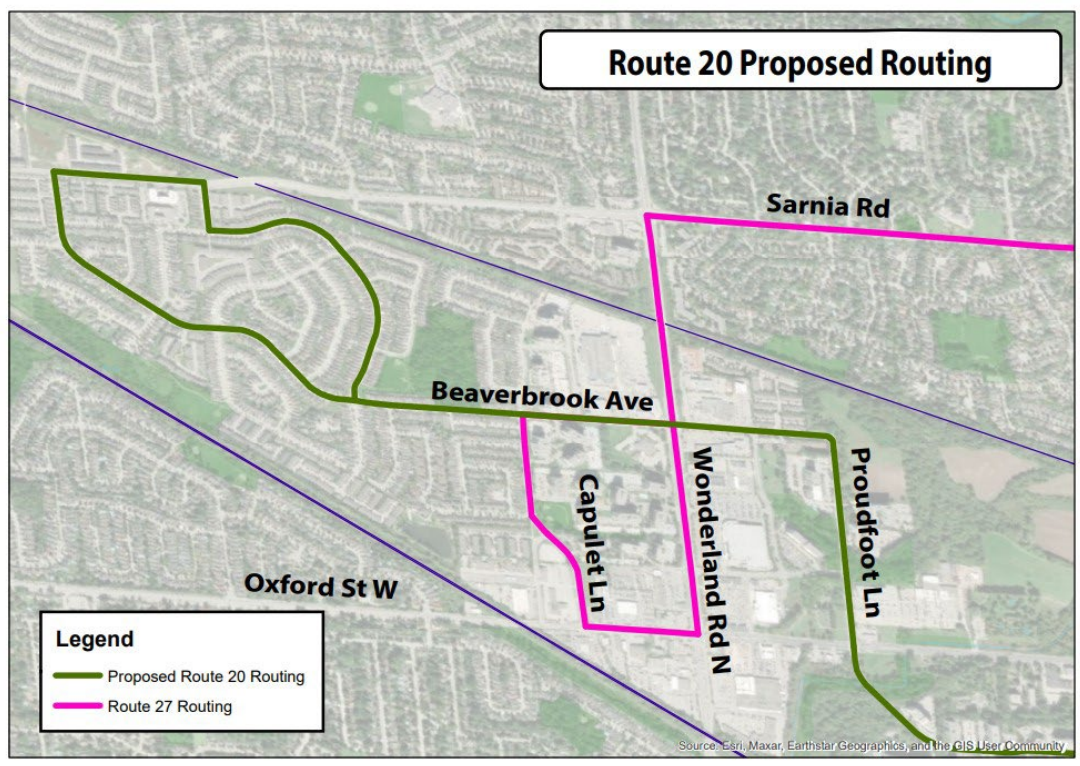


Figure II



Proposals based on the Annual Service Planning Review Process

The following recommendations are the result of public feedback and Operator input. The proposed changes are intended to address overcrowding concerns, improve schedule adherence and/or, increase frequency. While these recommendations were not directly proposed in the 2020-2024 Service Plan Framework, they are consistent with the strategic directions of the Service Plan Framework given changing ridership demand and network conditions.

ROUTE 17B

Proposed Service Changes:

1. Modify route to operate along Riverbend to Oxford

Issue/Rationale:

The proposed routing change will extend Route 17B service further along Riverbend. As a newly developing area that is home to the West 5 neighborhood which has many different shops, offices, restaurants and condos, requests from residents have been received to extend service further into the area. With the bus servicing this new section, it is anticipated that there will be an increase in ridership along this portion of the route. Additionally, existing riders will be able to get closer to these new points of interests than what Route 17B currently provides. See Figures III and IV. The proposed modification to the route can be accommodated within the existing schedule resulting in a cost neutral change.

Impacts:

There is only one stop located in the section of the route would be removed with the proposed changes (Stop #2548 Shore at Kains EB) and it currently has relatively low ridership, therefore there will be minimal impact to existing riders.

Recommended Service Change	Annual Service Hour Impact	Service Hour Impact (2024)	PM Peak Bus Requirements
All days – Removing 17B from Shore Road and operating along Oxford to Commissioners instead	0	0	0

Figure III

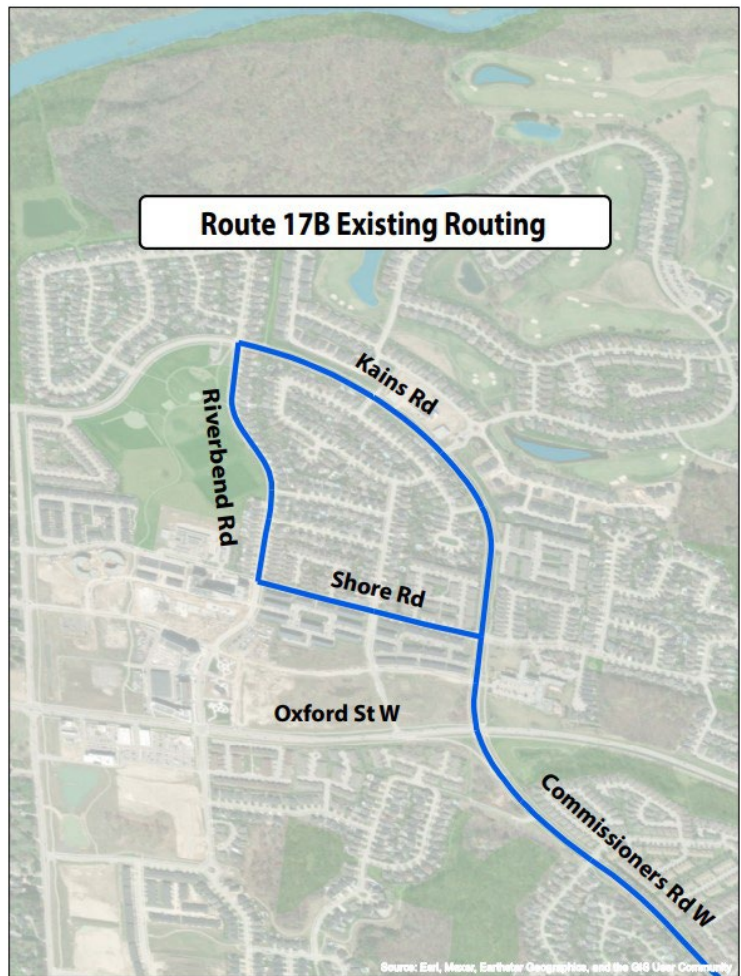
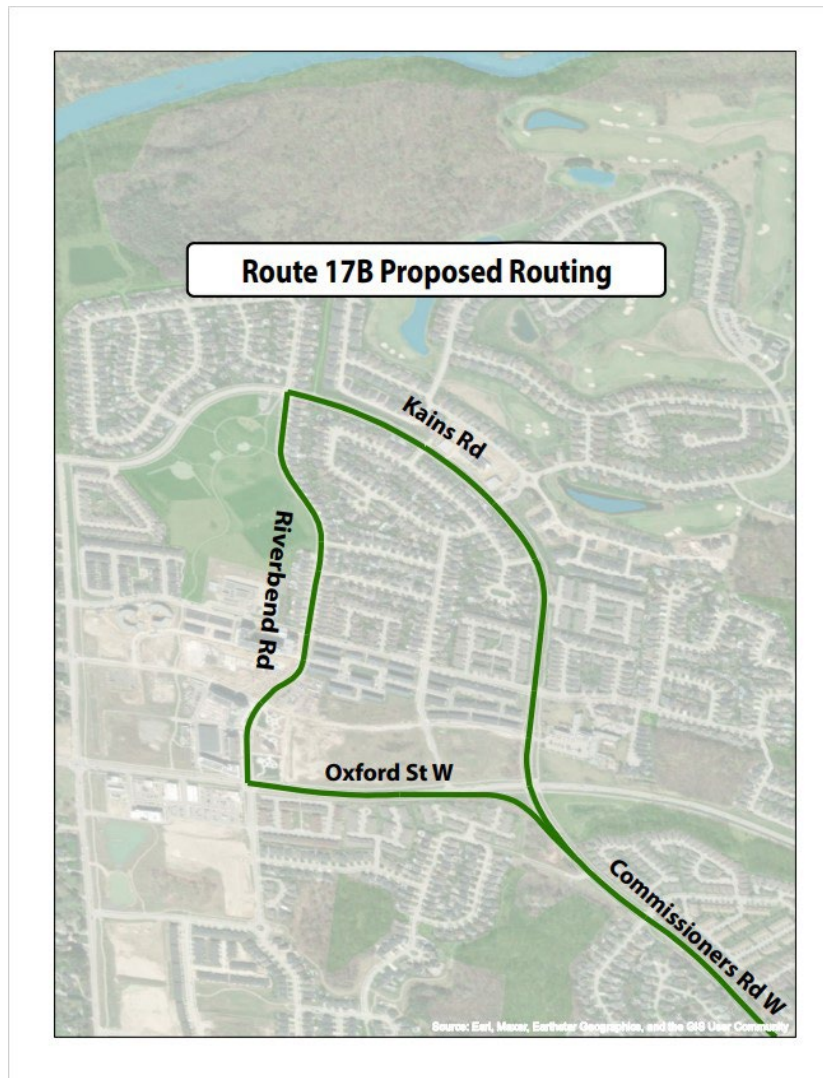


Figure IV



ROUTE 19

Proposed Service Changes:

1. Weekday – Add an additional bus to increase the round trip time all day
2. Saturday – Add an additional bus to increase the round trip time all day

Issue/Rationale:

The proposed increase to the Route 19 round trip time will serve to address ongoing schedule adherence and reliability concerns. With lowered speed limits in the Stoney Creek and Valetta neighbourhoods, as well as increased traffic along Hyde Park Rd, Route 19 has been unable to consistently maintain the scheduled headway, resulting in schedule adherence issues and frustration from passengers and operators. See Figures V and VI.

Recommended Service Change	Annual Service Hour Impact	Service Hour Impact (2024)	PM Peak Bus Requirements
Weekday – Increase round trip time to 150 minutes	5,040	1,620	1
Saturday - Increase round trip time to 140 between 8am and 2pm, 135 between 2pm and 6pm, and 160 between 6pm and 11pm	780	255	0

Figure V

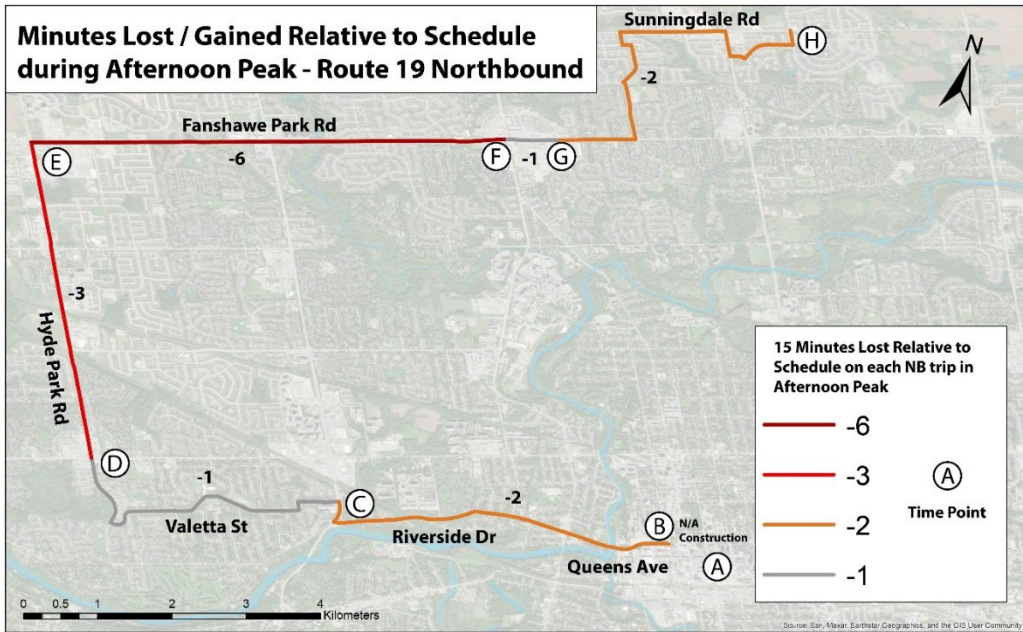


Figure VI

